

January 2016

FOCUS



JUNIOR LEAGUE OF LANSING

President's Message

By Michelle Lange

Happy New Year, Junior League of Lansing!

New Year's resolutions. We all make them- some of them stick, and some of them don't, but the impetus behind making resolutions is that we want to accomplish something. This year we, as a League, have resolved to bring us back to focus on our mission- to remember that we are committed to promoting voluntarism, developing the potential of women, and improving our community through the effective leadership of trained volunteers. I am happy to report, we have done a wonderful job keeping our resolution so far during this League year- here are just a few examples of things we have accomplished so far:

- Hosted three successful GMMs- each which had speakers who touched on the very heart of our mission. In September, we were able to hear from Mark Criss, of the LANSING CITY RESCUE mission, on the need in our area and how we can work together with organizations, such as his and others, to improve our community. October brought us Chris Pearson who discussed her time as a member of Junior League and how she eventually went on to form Komen Mid-Michigan. And at our November meeting JLL past president, Janet Freund was kind enough to come tell us her Junior League story and how League training and education has helped guide for her over the years.

- We held an OPS training with JLL past president, Kate Powers, who discussed how we can bring everything we do back to our mission.

- Began social media campaigns using #JLLeverywhere, #gotmission #JLLgivesThanks to continue to promote the Junior League of Lansing and all that we do.

- The Community Council organized several volunteer opportunities to improve our community through our DIAD and Community Outreach committees. These events included sorting food at the Greater Lansing Food Bank, tagging clothing for resale at the City Rescue Mission's Upscale Thrift Store, and working with Habitat for Humanity.

continued on next page

Instagram, Facebook and Twitter – are you connected? The JLL Communications Team wants to make sure you are up to date with all the great mission focused work Junior League is doing and these are a few of our tools. Help us make sure we are up to date with your good work by using these hashtags: #JLLeverywhere, #gotmission? #JLLgivesThanks

Junior League of Lansing Board of Directors

President

Michelle Lange

President Elect

Kelly Miller

Community Vice President

Lisa Gnass

Communications Vice President

Sarah Triplett

Education Vice President

Ann Bertsch

Fund Development Vice President

Heather Frick

Membership Vice President

Kristin Clark

Treasurer

Andrea Barnes

Secretary

Lydia Millbrook

Sustaining Advisor to the Board

Kim Hartman

MISSION STATEMENT

Junior League of Lansing Michigan is an organization of women committed to promoting voluntarism, developing the potential of women, and improving the community through the effective action and leadership of trained volunteers. Its purpose is exclusively educational and charitable.

continued from first page

- Lunch with League and our Annual Fund Raffle Ticket committees coordinated two of our most successful fundraisers- without their hard work, and our members support, we would not be able to accomplish any part of our mission. Big thanks to everyone who was part of these events, from our committee members and raffle ticket sellers to our LWL servers and everyone in between!

- New Member Recruitment and Member Relations also threw some great events this past fall! Most notably was their joint event at the Beer Grotto in downtown Lansing, where we had almost 60 people attend- almost half of which were women interested in learning more about the Junior League of Lansing!

The second half of our League year has the potential to be even better than the first half! Looking forward to some fun Member Relations events, High Heels and High Tea, new Community Outreach projects and DIAD opportunities, continued training on our mission, and many, many other fantastic happenings! Before we know it, the May Celebration will be upon us and we'll be welcoming in new members and seating the 2016-2017 board!

As I mentioned in my speech this past May, this year is not "my year"- it is "our year", and I sincerely hope that you are enjoying "your year" in League. If there is anything we can do to continue to improve the Junior League of Lansing, and your experience being a member, please make sure to share those thoughts and ideas with us. We're always looking for new and innovative ways to advance our mission!

Michelle
president@jllansing.org

STATE PUBLIC AFFAIRS COMMITTEE

By the Capitol City Delegates: Elizabeth Battiste & Alexis Chadderdon, SPAC Co-Chairs

Over the last century, individual Junior Leagues have played an active role in educating the public on the pressing issues of the day and advocating for change, legislative or otherwise, on behalf of those who don't have a voice.

The Michigan State Council of Junior Leagues' State Public Affairs Committee (SPAC) is an individual, apolitical coalition of Junior Leagues in Michigan that was formed to educate and influence public policy on specific issues relevant to The Junior League Mission.

SPAC identifies the issues that resonate with their members and develop strategies for tackling them. This advocacy takes many forms—it can be as straightforward as building awareness and educating the public about a pressing problem, or as ambitious as sponsoring and writing a bill that ultimately becomes a law.

Currently, SPAC is focused on two key issue areas: continuing the fight against human trafficking in our state and addressing the numerous problems facing our foster care system and the children under its care.

We've made great strides in the past couple of years to combat human trafficking in Michigan, but we still have work to do. To ensure that our legacy of truly addressing these crimes is cemented with success, the Junior League is committed to continuing the progress we made by focusing on new legislation that protects survivors of domestic abuse and legislation requiring information about human trafficking to be posted in certain establishments. These additional measures are imperative in ensuring that victims of human trafficking are safer and feel empowered to rebuild a life of their own.

In addition, we are proposing solutions for many issues plaguing Michigan's foster care system. SPAC is advocating for ten different foster care issues, and several pending bills are moving quite swiftly through the legislature. An example of legislation that SPAC is working on drafting and sponsoring would address the fact that foster care children's daycare expenses are not fully reimbursed. Currently, the State

of Michigan is one of only three states that has yet to modernize its daycare reimbursement structure and still reimburses foster care parents for a foster child's daycare at a state-licensed facility at an hourly rate. However, the daycare industry is structured to charge at a daily rate. This means that a day of childcare for a two and a half year-old would cost \$44.00 at a state-licensed daycare facility, but the State of Michigan would only reimburse \$2.60 per hour – and at most \$3.60 per hour – for that child's daycare, which requires a foster care family to pay \$11.60 to \$20.60 out-of-pocket for that childcare expense for that day.

One important way that you can become involved in supporting these efforts is by attending the Michigan State Council of Junior Leagues' "Day at the Capitol" on March 2, 2016. At this event you will have the chance to share our goals with legislators and ask them for their support. Our League is in the Capitol City, and it's a big goal of ours to have a strong presence at this year's event.



**SPAC
Capitol Day
2015**

COMMUNITY OUTREACH

By Carrie Waggoner

Food. Shelter. Access. Investing in the essential needs of our community.

The Community Outreach committee is responsible for continuing to move forward JLL's transition to issue-based activities around food, shelter, and access to food and shelter. Community Outreach combines some aspects of the Issue Based Community Impact committee and the former Community Service committee. The committee's focus is on identifying and establishing new relationships with organizations that serve JLL's issue area, as well as deepening existing relationships with organizations that serve JLL's issue area. So far this year, we have identified over a dozen organizations in the Greater Lansing area that committee members

are in the process of researching. We will share the results of our research with the DIAD/DIAM committees so that JLL can continue to focus those events on organizations whose mission support JLL's issue area.

The second focus of the Community Outreach committee is to plan volunteer events for members. The volunteer events are in addition to DIAD events. At the September GMM, we surveyed membership in order to get a better understanding of member preferences for volunteer events. We learned that, in general, our members prefer volunteer opportunities that are approximately 1-3 hours long and take place either on weekends or weekday evenings. We will strive to plan volunteer events

around member preferences. Our first Community Outreach volunteer event took place on December 5th at the Greater Lansing Food Bank, where members sorted food for distribution to local food pantries. In addition to our volunteering our time on December 5th, the JLL donated \$3,000.00 to the Food Bank.

Stay tuned for additional Community Outreach volunteer opportunities this Spring!

Carrie
diam@jllansing.org



LUNCH WITH LEAGUE

By Kim Sebastian

Junior League of Lansing's Celebrity Luncheon 'Lunch with League' Raises Over \$15K for Essential Needs in Greater Lansing Area

The Junior League of Lansing's 'Lunch with League' fundraiser took place on Thursday, November 12, 2015 and was generously sponsored by Foster Swift and the University Club of Michigan State University. This event raised over \$15,000 to provide and meet essential needs in the Greater Lansing area.

Thirteen local 'Celebrity Servers' donated their time and competed to sell the most tickets to the luncheon and earn the most 'tips'. Local celebrities included media personalities, legislators, small business owners, and organization leaders. In addition to attendees getting the chance to walk the red carpet in support of their Celebrity Server, President Elect, Kelly Miller, gave these several hundred luncheon attendees a great overview of JLL's mission, values, the charities and organizations JLL works with, and why JLL was raising funds for essential needs. The luncheon, hosted by the University Club of MSU, included a variety of delicious lunch entrée options, delectable desserts by Sweet Encounters, trivia, a 50/50 raffle, and several prize drawings.

Celebrity Server, Real Estate Agent & proud JLL Member, Dana Zecchino, took home the awards for most tickets sold and most tips earned! Dana sold 40 tickets and earned over \$1,500 in tips, which accounted for nearly 18% of the fundraiser's total revenue. Congratulations, Dana!

This fundraiser would not have been possible without the generous financial support of these local sponsors:

FOSTER SWIFT
FOSTER SWIFT COLLINS & SMITH PC || ATTORNEYS

UNIVERSITY
Club

MICHIGAN STATE UNIVERSITY

Foster Swift has been a true partner of this fundraiser over the past few years and has been a driving force for Lunch with League's success. Celebrity Server, JLL Member & Foster Swift Attorney, Patricia Scott, raised over \$3,200 between Foster Swift's donation, tickets sold, and tips earned accounting for over 22% of total revenue. Way to go, Patricia! The Junior League of Lansing is so grateful for Foster Swift's continued support of JLL by making such a large financial impact in addressing essential needs for Greater Lansing.

The Lunch with League committee thanks the Celebrity Servers who participated, the University Club of MSU for providing a lovely venue & incredible staff for JLL to host this fundraiser, and the attendees for making this year's fundraiser such a success!



SUSTAINER UPDATES

By Kim Hartman

What a whirlwind it has been! I feel as though I was just meeting all of these incredible women just yesterday. Yet, here we are...2016! I am happy to report we are in capable hands. Women today are busier than ever with families, careers and volunteer work but show their continued commitment to our organization. I am often amazed at the continued viability of the organization locally and globally. We are truly a force to be reckoned with and even though times change, the commitment to our mission never wavers.

This year, under the guidance of our Training chair, Jennifer Zeiss, we kicked off a campaign called "got mission?" Think, "got milk?" I say "we" because I am taking on some of the Education VP duties for the remainder of the year. Each GMM we will focus on mission training through mini trainings, special interactions and sustainer speakers.

In October, our first OPS training centered on the mission with Kate Powers presenting an interactive exercise helping members better understand our mission. She used the acronym "DIP" to help us remember the main components of our mission: developing the potential of women, improving the communities and promoting volunteerism.

Past sustaining member, Chris Pearson also spoke at our October General Membership Meeting with a moving speech. She credited her successes to her time in JLL and the support she received in helping her found the local Susan Komen affiliate in our community. Because of this, she is credited with saving hundreds of lives. Her speech was a testament to the power of "developing the potential of women".

In November, Janet Freund, past president and sustaining member spoke. She asked us to think, not only about "why we join JLL" but "why do we stay". Janet shared, in detail, her reasons: "sacrifice, compassion and humanity". It was certainly thought provoking to think about the "why we stay".

For the upcoming 2016 year, we will do an interactive Parliamentary Procedure training and we will also hear from sustainer Bridget Balesky who will talk to us about our Endowment Fund and how our active members can make a bigger difference in growing the fund. Along with the help of PE Kelly Miller, a group of us from training and membership council will be working on updating leadership training and new member training. If you have an interest in helping with our training programs, we will be happy to have your assistance and JLL knowledge!

We have had a few great sustainer activities along the way!! The JLL Fall Luncheon was a wonderful success. It was held at the University Club, with over 60 people in attendance. Board members, Lisa Gnass who is our Community VP and Sarah Triplett, our Communication VP both spoke. Lisa brought everyone up to speed on the new direction for our Community Council. Sarah provided a tutorial on the JLL web page. In addition we heard from the Endowment Board. Our Endowment is in very good hands with chairs Bridget Balesky and Sandy Grettenberger at the helm. They have revamped how donors are recognized and are proactively looking at innovative and effective ways we can increase our fund.

To wrap up our 2015 year, Kerry Brick opened her beautiful home to host our annual JLL Open House. It was a lovely afternoon/evening with many of you there enjoying the good company, food and drink! Thanks to those who attended! An even bigger thanks to those of you who helped make the event a success in some way... THANK YOU to Sandy Grettenberger, Janet Freund, Chrissie Brogan, Deb Atkinson, Patty Croom, Kim Blair, Patti Black, Patricia Scott, Jane Bitiscas, Cheryl Barhtolic, Lisa Gnass, Michelle Lange, Lydia Millbrook, Andrea Barnes, Janine Medler, Betsy Svanda, Mary West, Cathy Lazar, Courtney Schnelker, Nanette Naser, Sandy Little, Amy Suhrheinrich, Bridget Balesky, Kristin Clark, Heather Frick, Linda Dansby, Anita Lindsey, Mary Beth Pirich, Catherine Brennan and Elizabeth Battiste.

The Chicago Bus Trip was another great success of shopping and fun under the help of Katie Strong and Nancy Nyquist! They are looking for two capable ladies to step up to carry on the tradition next year. Let them know if you are interested! Many thanks to both of them for making this possible the last few years! With the New Year we can look forward to getting out Simply Social groups back up and running.

Finally the biggest challenge for all of us is communication. Our sustainers range in age from their early 30's to women in their late 80's. Being in my 50's, I fall somewhere in the middle. I remember attending an ODI years ago where a speaker discussed the upcoming issues of age diversity. One of those issues was communication. I am sure never imagining the type of technology we have now. I certainly didn't! In addition, at that time, most actives were under 40 and sustainers in their later 40's and up. As sustaining advisor, one of my jobs is to make sure all of you are up to speed on all things JLL. Since I grew up without a cell phone

and still enjoy a hand written note I am comfortable receiving /sending or owning "hard copies" of documents. Yet, I am also fully engaged in using a smart phone and other technological advances. Budget issues effect communication as well. We save hundreds of dollars when we can send things electronically but we know there are some who don't use a computer at all. So, I ask your patience as we figure out the best way to make sure all of you are brought up to speed. A simple note or flyer is no longer enough...we now have a web page, Twitter, Facebook, email and an app! I will do my best to make sure you get the information the best way possible. Do take advantage of our many communication opportunities to learn more about our JLL.

This New Year do think of those we have lost and members who have lost family. Keep them in your thoughts and prayers. Be sure to reach out. In closing, I hope you will each take the time to think about why you stayed in JLL, what it means to you. We are quite an exceptional group of women and we make differences in lives everyday. As Janet Freund so eloquently stated, "Junior League of Lansing makes our community a better place." Happy 2016!

Kim
sustainers@jllansing.org

#GOT MISSION?

By Jennifer Zeiss

When I started this season of JLL as the Training Chair I wanted to make an impact and to help us grow as a League. I started to think back to why I chose to be a part of JLL to begin with. At the time, I wanted to be more involved in my community, I wanted to maximize my talents to grow as a leader, I wanted to be inspired and meet some new people. I also have some great examples in my life that volunteer their time in the community and I wanted to follow in those footsteps in my own way, I just didn't know where to start. Without realizing it at the time, I was ultimately interested in joining in line with the Junior League mission statement. To refresh "The Junior League of Lansing is a non profit organization of women committed to promoting volunteerism, developing the potential of women, and improving the community through effective action and leadership of trained volunteers." I realized that the importance of this statement really was what needed to be focused on. As a League we could not portray this statement in our community without proper training.

As the idea began to form I wanted to have something visible throughout the year. A logo or a picture that would make everyone think about the mission at each meeting and be recognized on social media. As we brainstormed an ad from the 90's popped into our heads. Do you remember the old "Got Milk?" ads? They focused on the importance of drinking milk as part of a healthy diet. It got us thinking and we built on that idea. You need milk to stay strong, in the same way we as members need the components of the mission statement, to grow into a stronger Junior League. From this idea "Got Mission?" training focus was created.

Our first course of action was to strengthen our Board and the Committee Chairs on the meaning behind the three main parts of the mission statement. With a proper understanding they could then ensure that each person coming into League would do so with a stronger understanding of our mission statement. Next, for the GMM's and OPS training, we needed speakers that could really relate to the members. Who better to speak about the mission that those of us who have really gotten to know it, our Substainer's. We started this year with a great OPS training given by former JLL President, Kate Powers. She reintroduced and emphasized the three main parts of the mission that we will be focusing on this year: Promoting volunteerism, developing the potential of women and improving the community. All of our speakers this year at the GMM's and OPS will be members or sustainers of JLL. Each month the speakers are sharing their experiences in JLL, portraying the components of the mission and how it has benefited them in their everyday life. It has been so inspiring to hear what these amazing ladies have learned and how they have applied it. Moving forward with the year we will continue to break down each part of the mission statement in the GMM's. Our next OPS training will be focusing on Parliamentary procedure, teaching the members about our rules, ethics and customs that run our meetings and how Junior League operates.

The beginning of the year has been everything I hoped it would be. Our speakers have shared some amazing knowledge and experiences! I have already learned so much and am really excited to hear from everyone else we have set up for the rest of the year. So, as you are finishing your DIAD's and other projects, remember to think do you "Got Mission?"

Jennifer
training@jllansing.org

ANNUAL RAFFLE RESULTS

By Maggie Louks, Annual Fund Committee Chair

Thanks to the generosity of long-time raffle sponsor, Becky Beauchine Kulka, the prizes for the 2015 JLL Raffle were five, \$1,000 gift certificates to Beauchine Kulka Diamonds and Fine Jewelry. The raffle drawing winners were announced at Sustainer Kerry Brick's home during the Holiday Party on December 1. The five winners were:

- Dale Lamb
- Mary Beth Pirich
- Jan Reed
- Torye Santucci
- Ray Stanfield

As the top selling sustainer social group, the Chardonnay's will receive a wine and cheese party courtesy of the Annual Fund Committee.

Thank you to the raffle sponsor and all active and sustaining members for supporting the annual JLL Raffle. The outstanding efforts this year resulted in more than \$13,000 raised toward JLL's efforts to make a significant and measurable impact in the greater Lansing community.

Maggie

jllfundraiser@jllansing.org

SHOW ME THE MONEY!

It's hard to believe that the Junior League year is about half-way over, which means it's almost time for annual dues! Dues notices will be mailed in January and dues payments are due on February 28th, 2016.

As a reminder, dues for Active members are \$130, Senior Actives are also \$130, and Sustainers are \$92. All dues payments must be made by February 28th, 2016. A late fee of \$16 will be assessed to those dues payments made after February 28th.

Members have the option to pay via check in the mail to our Dues Bookkeeper, Jennifer Edmonds, or via the Junior League of Lansing website, <https://www.jllansing.org>. If elected to pay online, please note that an administrative fee of \$2.50 will be charged for Active members, and \$1.75 for Sustainers. The fee will be charged at the time the dues payment is made.

Additionally, please consider "rounding up" your dues to make a contribution to the Junior League of Lansing Endowment Fund. Details regarding the dues round up will be included with your dues notice.

JLL SLATE BIOS 2016-2017



Alexis Chadderdon, President Elect

Alexis was been an active member of JLL since May 2011. As a new member, Alexis served as a co-chair of Kids in the Kitchen. During her first active year, she completed a double placement as New Member Recruitment Vice-Chair and member of the Marketing & PR Committee, and she was recognized for her efforts with the Placement Award that year. Alexis has also served as New Member Recruitment Chair, Training Chair, on the Board as Membership Vice-President and Education Vice-President, and currently as SPAC Co-Chair and a Nominating & Placement Advisor. Additionally, Alexis participated in the Digital Cheetah sub-committee and assisted with converting the JLL website. In October 2013, Alexis attended ODI and participated in the membership track. Alexis lives in Williamston with her husband, Allen, and their kitten, Dutchie. Alexis enjoys gardening, cycling, and baking.



Stacy Bogard, Secretary

Stacy Bogard joined the Junior League of Chicago in 2011. Originally from East Lansing, she moved back to the area and transferred to the JLL in fall 2013. In Chicago, she served on the Special Events and Member Satisfaction Committees, and has served on Member Relations, as a New Member Advisor and New Member Recruitment and Training Chair in Lansing. A graduate of Hope College, she is the Assistant Director for Communications, PR & Marketing for the Michigan Association of School Boards and also works part-time for the College of Diplomates of the American Board of Endodontics. She bought her first condo in Okemos last year (right by two other Junior Leaguers!), and enjoys fixing it up, as well as traveling, watching way too many TV shows, craft projects, sporting events and concerts, and spending time with family and friends.



Melody Kindraka, Communication VP

Melody grew up in Canton, MI, and attended Michigan State University. After graduating with a degree in communications and public relations, Melody accepted a job with the Michigan State Police doing media relations and crisis communications. She currently works on public information campaigns in the Michigan Office of Highway Safety Planning. Melody is an avid sports fan and enjoys singing with the MSU Choral Union. She joined the Junior League of Lansing in 2013, and has served as a co-chair for a Kids in the Kitchen planning committee, member and co-chair of the Annual Fund Committee, and chair of the Marketing Committee.



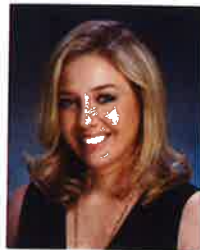
Carrie Waggoner, Community VP

Carrie Waggoner is an attorney with the Michigan Department of Health and Human Services (MDHHS). Carrie and her husband, Nicholas, moved to the Lansing area in 2008 when Carrie started law school at MSU. Carrie was part of the new member class of the 2012-2013 JLL year. Carrie was a member of the Issue-based Community Impact Committee in 2013-2014 and 2014-2015. She is currently chair of the Community Outreach Committee. In her spare time, Carrie enjoys baking, reading, yoga, and brunching with friends.



Kristin Keiswetter Clark, Education VP

Kristin is originally from Petoskey, Michigan, has lived in New York, France, Oregon, New Hampshire, California and New Jersey during the years between undergraduate at Wells College and graduate school at Cornell University. Since 2002, Kristin has been employed as an HR Leader at Petoskey Plastics and currently works part-time from home recruiting and developing talented team members with monthly trips to manufacturing plants in Hartford City Indiana, Morristown, Tennessee and Petoskey, Michigan. She also recently launched her own business, Key Home Partners, a real estate solutions company dedicated to improving neighborhoods in East Lansing house by house for residents interested in living in this area. She, her husband Sam, and her 5th grade son Charlie relocated to East Lansing in 2009. Kristin joined Junior League to familiarize herself with the volunteer opportunities offered in the Greater Lansing area and to meet other women who are dedicated to giving back to the community. Depending on the season, you might find Kristin skiing, running, biking, fly fishing, skeet shooting. She won new member of the year in 2010. She has held placements with Fund Development, New Member Advisor, Nominating Placement Advisor and currently serves as Membership VP.



Dana Zecchinno, Fund Development VP

Being born and raised in Greater Lansing, I have a love and passion for our community. I see the remarkable advantages we have in our area: our State's Capital, Michigan State University, Sparrow Hospital, and fantastic area schools (to name a few); but it's the people in this community that I love most and that is why I have stayed here to raise a family and start a career. I am a realtor with Coldwell Banker Hubbell Briarwood, a member of the Junior League of Lansing and a member of Women Working Wonders (W3). Because my husband serves as the President of the Board for Habitat for Humanity Lansing, I am also an active volunteer for Habitat. Any left over time I have, I spend it with my family: my husband Rich, son RJ (7) and daughter Lyla (4).



Karissa Chabot-Purchase, Membership VP

Karissa and her husband Stephen have made Lansing their home since graduating from MSU, where Karissa has her Bachelor's degree in Political Theory and Constitutional Democracy and her Master's degree in Critical Studies in Literacy and Pedagogy. She currently works for MSU's Career Services Network where she is the Career Consultant for James Madison College— MSU's residential college in public affairs and public policy. In her role, she coaches students on exploring potential career paths, preparing for life beyond college, and making connections to put their career plans in motion. Since joining the JLL, Karissa has served as Chair of Kids in the Kitchen, on the Member Relations Committee, as New Member Recruitment Chair, and as a Nominating/Placement Advisor. She is currently serving as Placement Chair. When she's not working or volunteering Karissa spends most of her time working on her home, organizing anything she can get her hands on, and being 'Mommy' to her toddler, Lincoln.

JLL SLATE BIOS 2016-2017, CONT'D

NEW PLACEMENT ADVISORS



Lydia Millbrook

Lydia has been an active member of League for eight years. During this time, she has seen the positive impact the women of JLL have made and that is why she continues to serve this League. Lydia has served under the Fund Development Council on the Signature Fundraiser Committee, the Membership Council as a New Member Recruitment Advisor for two consecutive years, the Communications Council as Publications Vice Chair and Chair, the Community Council on the Done in a Day Committee, the Education Council under Arrangements, the ever social Member Relations Committee and is currently serving on the Board as Secretary. Lydia lives in Lansing with her husband, Roger of 12 years and three children, Cara (18), Max (10) and Henry (8). The things she can't live without besides her family are...music, photography, travel and food! She is in constant awe of the women in this organization and only wants to give back to our community, and support our mission at the same time.



Kim Sebastian

Kim Sebastian has been a proud and active member of the Junior League of Lansing since 2013. For 2015-2016, Kim is serving as the Chair of the Lunch with League committee. 2015's Lunch with League raised in excess of \$15,000 for essential needs in Greater Lansing. She oversaw the planning & development, implementation, and management of this event and had a great time working with the University Club of MSU staff, the Lunch with League committee, the Celebrity Servers, the board, and the communications committee to ensure this event's success! Kim currently works in advertising sales as an Account Executive for Comcast Spotlight. Kim's prior background is in Event Marketing & Sales, where she was a show promoter for nationally touring events for 5 years. She promoted various family shows like Disney On Ice, Marvel Universe LIVE, Monster Jam, Ringling Bros. and Barnum & Bailey Circus, and Disney Live! in Michigan, Ohio, and various markets across the Midwest. Kim is a proud graduate of Grand Valley State University, where she earned her BBA in Marketing & Sales. She loves to sing and was a member of GVSU's 'MidNight Snack' female a cappella group for 4 years. Kim's hobbies include travelling, playing golf, catching a Broadway show, baking, and going for walks with her dog, Molly.



Patricia Scott

Patricia Scott joined League as a new member in 2011-12. Patricia Scott's first position was on the DIAD Committee, and then she became Dues Bookkeeper. Subsequently, she joined the Finance Council, where she has been the Treasurer Elect, Treasurer (Board position), and it currently the Endowment Treasurer (Endowment Board). She also has been a celebrity server at Lunch with League for the last three years. Patricia continues to be very active in League, and truly enjoys being a part of, and supporting, this great organization! Patricia Scott is an attorney with Foster, Swift, Collins & Smith, PC. Patricia focuses her practice in the areas of Bankruptcy, Banking and Finance, Collections, Real Estate, and Commercial Litigation. She represents creditors in Chapter 7, 11 and 13 cases and Chapter 7 Trustees in all aspects of the bankruptcy estate. Patricia also represents small and mid-sized businesses to large corporations in multi-faceted litigation matters in state and federal court. Her work with financial institutions includes, loan workouts, foreclosures, collections, receiverships and various complex banking and finance issues. Patricia received her law degree from Thomas M. Cooley Law School, and graduated second in her class with magna cum laude honors. She resides in DeWitt, Michigan with her husband Michael. Patricia and Michael have one daughter, Megan, who attends Grand Valley State University.



Maggie Louks Welgos

Maggie is in her second active year in Junior League and is the chair of the Annual Fund – Raffle Committee! She is currently finishing her last year of law school at Michigan State University College of Law and has also worked at Accident Fund Holdings. Although she is originally from the Chicago suburbs, she has called Michigan home for the last nine years. In her free time, she enjoys shopping, volunteering with the MSU Women's Law Caucus and spending time with her husband, Brandon, and fur baby, Jackson!



Stephanie Collier

Stephanie is a lifetime resident of the Lansing area, growing up in Haslett. She attended Michigan State University to study finance and currently runs her own financial planning practice with Northwestern Mutual. Stephanie is married to Cody and together they have their cat, Jasper. In January of 2012, she joined Junior League of Lansing as a new member and is enjoying every minute of it!



Jenny Corr

Jenny Corr is originally from the Metro-Detroit area, where she graduated high school from Notre Dame Preparatory before gaining her Bachelor's of Science in Hospitality Business from Michigan State University. She moved to Okemos after meeting her husband, Michael, a commercial real-estate agent in Lansing. She now works as an occupational therapy assistant in the inpatient rehab unit at Sparrow Hospital. Jenny loves traveling, Michigan ciders, working out, budgeting, doughnuts, beauty products, binging on reality television, and anything cat related. Her and her husband share their home with their four fur babies, Jake, Storey, Oscar, & Artie.



Sarah Triplett

Sarah Triplett has been a member of the Junior League of Lansing since 2010. She currently serves as the Communications VP and has previously served as the Chair of the New Member Recruitment Committee, as a Placement and New Member Advisor, and as a member of the Community Service Committee. As a New Member, Triplett served as a co-chair for Kids in the Kitchen. Sarah joined the JLL to meet like-minded women who want to volunteer and give back to the community, and JLL continues to exceeded her expectations. Triplett lives in East Lansing with her husband Nathan, son Teddy and their small dog Lexi. She currently works as the Director of Public Policy for Creative Many Michigan. She graduated from Hope College in 2004 with B.A. in Communications and Political Science.



Kim DeLucia-Drew

Kim DeLucia-Drew is a 5th year active member of JLL, currently serving on the Community Outreach Committee. Other placements she has held are Community Service, Member Relations and two years on the Annual Fund Committee, including one year as Co-Chair. In life outside JLL, Kim is the manager of Accident Fund Holdings Subrogation Department. She is also a proud graduate of MSU. Kim and her husband Dan are football and basketball season ticket holders for many years and are known for their tailgates.

JLL SLATE BIOS 2016-2017, CONT'D

NEW MEMBER ADVISORS



Meghan Bartow

Meghan Bartow is a native of Texas, but has now lived in East Lansing for 3 years with her wonderful fiancé Jonathan and her adorable dog Fresca. She loves the state of Michigan and plans to be here for a long time. She obtained a Bachelor of Science degree in Psychology from Spring Hill College in Alabama; a Master of Science degree in Educational Psychology and an Education Specialist degree in School Psychology from Oklahoma State University. She now works as a School Psychologist for two school districts, which keeps her busy. Meghan is a first year Active member with the Junior League of Lansing and currently serves on the Community Outreach team. Outside of Junior League, Meghan helps advise the MSU chapter of her sorority Delta Gamma and is the Vice President of her Oklahoma State Alumni Chapter in Lansing. Meghan's interests include MSU, LSU and OkState sports, traveling, going to the gym and having fun with friends and family.



Erin Hagen

Originally from Norman, Oklahoma, I moved to Michigan with my family after my fathers job brought him here. I attended high school locally at Grand Ledge High School. In high school my hobbies were sailing and racing sailboats and I was on the swim team. After high school I started at Western Michigan University where I was in the sorority Alpha Chi Omega and I studied abroad in Scotland for 6 months. After that I transferred to Michigan State University where I graduated with a degree in Zoology. After graduating I worked for a natural gas company doing land acquisitions and title work. I was also a realtor in East Lansing, before settling into my favorite career of environmental consulting. At Michigan State University I met my husband Keith. Together we have three amazing children, Annabella (10), Vivienne (6), and Abbot (4). All of our children attend school in East Lansing with the oldest two attending Whitehills Elementary and Abbot attending St. Thomas. My hobbies include: scuba diving, triathlons, paddle boarding, gardening, and spending time with family and my wonderful chosen family (friends).



Maureen Watson-Bolger

I joined the Junior League in 2012 looking for a group of motivated women who wanted to make a difference in the community and have a good time together. It's been wonderful to meet so many great women that are fun to spend time with socially but have also taught me things I can apply in my professional life. I have had placements on the Arrangements, Issue Based Community Impact, and Member Relations Committees and have enjoyed getting to know the people and the process of League. My husband, Matt Bolger, and I have been married three years and I have two stepdaughters, Kathryn (17) and Rachel (15). We live in Dewitt.



Sarah Clarke Stevens

Sarah Stevens joined the Junior League in 2014, shortly after moving to the Lansing area. She served as a member of the day of event committee for Kids in the Kitchen and currently serves as a member of the Community Outreach team. A native of Roanoke, VA, Stevens is a graduate of the University of Tennessee where she earned her B.A. in Psychology and M.S. in K-12 Education. Stevens has worked as a teacher, instructional coach, and school administrator and currently serves as the Magnet Program Coordinator for a new initiative in the Lansing School District. She speaks at the national and international levels about the power of Magnet Schools and specialized programming to bring positive change to struggling schools. In her spare time, Stevens enjoys TRX training, traveling, volunteering, and exploring the “mitten” in search of great restaurants and music. She is an avid natural foods cook and loves to plan meals for her family and friends. Stevens resides in Okemos with her husband, Brian, and Chocolate Lab, Jake.



Jennifer Edmonds, Treasurer-Elect

I am originally from Owosso, Michigan and currently live in Grand Ledge. I have been with my husband for 14 years, married for the last 7 and we are currently expecting our first child, a daughter due at the end of March. I am a proud numbers nerd, loving spreadsheets and analytics. A Certified Public Accountant and Certified Fraud Examiner, I spent nearly 7 years working in public accounting for a Lansing area CPA firm before taking on my current job as an Auditing Specialist with the State of Michigan. I joined Junior League as a new member in 2009 to learn more about needs in the community, engage in community service projects and get to know other women with similar interests. I have greatly enjoyed serving on the Community Service Committee and DIAD/DIAM Committee and as the Community Service VP over my first 5 years of active membership. Now I look forward to applying my love of numbers and accounting as the Dues Bookkeeper this year and Treasurer-elect next year.

GREETINGS FROM THE JLL ENDOWMENT FUND BOARD!

By *Bridget Brick Balesky*

Many of you remember organizing and attending JLL's annual "Holiday Happenings Fundraiser" years ago. This successful event was due to hundreds of volunteer hours and many community donations. Did you know that the annual check written from the JLL Endowment Fund brings a similar amount into JLL as the past Holiday Happenings Fundraiser, but without requiring hundreds of volunteer hours? This is only possible because of your generous donations to the Endowment Fund.

The Endowment Fund is in its 32nd year and had a net asset value of \$567,041 at the end of November. The 2015 check from the Endowment Fund to JLL amounted to \$28,647. That important check reduces the time that Active members spend fundraising and allows them to be more hands-on in the community. Imagine the essential needs of food and shelter in our Lansing community that could be met by JLL if the Endowment Fund could reach a value of \$750,000. That would lead to an annual check to JLL in the amount of about \$37,500. Imagine the essential needs that could be met by JLL if the Endowment Fund could reach a value of \$1,000,000 someday. That would lead to an annual check from the Endowment Fund to JLL in the amount of about \$50,000!

A donation to the Endowment Fund is a wonderful way to celebrate the memory of a friend or loved one, to honor someone special, or to celebrate a birth, an adoption, a new job, or a retirement. If we all donate to the Endowment Fund when we pay our annual JLL dues this quarter, it will give the Endowment Fund a boost and might increase the Endowment Fund check written to JLL. So, if your financial circumstances allow you to "round up" your dues payment to donate \$10, \$20, \$50, or even \$100 please do so. We have received positive feedback regarding the convenience of making on-line donations at www.jllansing.org and this can even be done if you pay your dues on-line and "round up" the amount to make a tax deductible donation to the Endowment Fund.

Another loving way to preserve the Legacy of League is to name the Junior League of Lansing Endowment Fund in your estate planning documents. Helpful information regarding planned giving is now available at www.jllansing.org.

It is a pleasure serving on the JLL Endowment Fund Board with Vice Chair/Secretary Sandy Grettenberger, Treasurer Patricia Scott, JLL President-Elect Kelly Miller, and Community Members Jeff Powers and David Wakeland. Their professionalism, dedication and enthusiasm for growing the Endowment Fund are appreciated. We are seeking nominations for one Board position to be filled by a community member from July 2016-June 2018. Although this Board position can be filled by the spouse of a JLL member, any community member can be nominated. Endowment Fund Board meetings are held quarterly and the Fund is professionally managed by Tri-Star Trust Bank. Please send me the name of anyone who would like to learn about the upcoming opening on the Board.

We send a heartfelt thank you to all donors for their generosity. As the deadline for this edition of the FOCUS was back in November, look for a complete list of all 2015 donors by donation level in the next FOCUS issue July 2016. We celebrate the heart behind every dollar donated to the Endowment Fund. Please continue to help the Endowment Fund and JLL reach new heights by making a donation today! Together, we can ensure that more JLL volunteer hours can be spent directly in the community growing the Legacy of League rather than fundraising.

Warm regards,

Bridget Brick Balesky
2015/2016 JLL Endowment Fund Chair
Bridget@brickinc.com



DONOR LIST

JLL Endowment Fund Board sends a heartfelt thank you to donors who supported the Endowment Fund from January 1 - November 30, 2015 (The donor list for the entire 2015 calendar year, including donations made in December, will be in the July 2016 FOCUS)

Benefactor (Gifts of \$1,000 or more)

MSU School of Hospitality Auction

Pacesetter (Gifts of \$250 to \$499)

Kerry Brick
Sandy Grettenberger
Dr. J Clyde and Marcia Spencer

Supporter (Gifts of \$100 to \$249)

Susan Allis
Bridget Balesky
Patricia Brogan
Shary Carr
Barbara Clark
Marilyn Culpepper
Jan Kahl
Ruth Kositchek
Suzanne Kregel
Michelle Lange
Joan Legg
Lori Noyer
Sharon Regan
Traci Riehl
Polly Schwendener
Mary Van Wieren

Patron (Gifts of \$50 to \$99)

Chrissie Brogan
Kristin Clark
Barbara Cleland
Tricia Foster
Marcia Gresens
Kimberly Hartman
Donna Hay
Pat Linnell
Katie Lynwood
Eleanor Marazita
Sue Mills
Erin Skene-Pratt
Jennifer Schick
Mary West
JLL
Bernick Radner Ouellette & Little PC
(Katie Lynwood's Law Firm)

Friend (Gifts of \$1 to \$49)

Deborah Jean Atkinson
Kathryn Ault
Mary Ann Austin
Candace Barnes
Zoe Bassos
Joan Bauer
Susan Benivegna
Nancy Berger
Stacy Bogard
Carolyn Boger
Frances Bradley
Ginny Brooks
Linda Burnham
Kristyn Carmichael
Alexis Chadderdon
Eleanor Charchut
Susan Combs
Georgia Condon
Amy Crites
Patricia Croom
Katrina Daniels
Carolyn Dudley
Darrell Duffield
Caryn Edwards
Lynn Fiedler
Barbara Fishell
Gretchen Forsyth
Tula Frangos
Janet Lea Freund
Lori Ann Fuller
Preeti Gadola
Barbara Galloway
Donna Gardner
Trish Garvey
Linda Grua
Joanne Hacker
Jody Haddad
Janet Haley
Barbara Hamilton
Phyllis Harden
Annie Hayes
Alicia Roxy Hopping
Anne Hopwood
Catherine Hornbach
Karen Hubbard
Katharine Hude
Phyllis Irwin
Tracy Jelneck
Catherine Kerwin
Kristin Kildea
Marian Korroch
Suzanne Lasch
Cathy Lazar
Christie Lemon
Mary Liechty
Margaret Liedholm
Barbara Ruth Lindquist
Anita Lindsay

In Memory Of Donations

Shary Carr-In Memory of Virginia Atayan
JLL-In Memory of Mary Rose Siebold
Sue Mills-In Memory of Mary Rose Siebold
Sue Mills-In Memory of Betty Medler
Sue Mills-In Memory of Bill Stapelton
Mary West-In Memory of Mary Rose Siebold
Kristine Pricco-In Memory of Corinne Minni

In Honor Of Donations

Bridget Balesky-In Honor of Kerry Brick
Chrissie Brogan-In Honor of Ginny Brooks
Sandy Grettenberger-In Honor of Kim Hartman

A special thank you to Ginny Brooks for her involvement with the MSU School of Hospitality Auction and securing the JLL Endowment Fund as a recipient of a \$1,500 donation from the Auction again this year!

Sandy Little
Susan Lupo
Dorothy Martin
Karen McCloskey
Sally McCoy
Ellen Mckay
Amy Sue Melville
Kelly Miller
Betty Moore
Beverly Oetzel
Jennifer Pace
Maggie Papesch
Candy Parker
Susan Patterson
Mary Beth Pirich
Lauren Plue
Kristen Pricco
Nicki Proulx (Sanford)
Brenda Ramsby
Janice Reed
Caryn Elizabeth Rhodes
Arcelia Richardson
Kay Ellen Riegel
Rachel Rosenbaum
Aimee Ross
Pamela Ruth
Courtney Schnelker
Patricia Scott
Melissa Seifert

Denise Shaheen
Nancy Sheldon
Nancy Shepard
Linda Smith
Kristen Soltis
Dorothy Spousta
Charlene Sproles
Julie Stevenson
Katie Strong
Amy Suhrheinrich
Barbara Sukenik
Betsy Svanda
Polly Synk
Diane Tarpoff
Angela Vlahakis
Betty Vlahakis
Ann Vogelsang
Pamela Anne Wakeland
Kimberly Watters
Alex Wiesner
Judy Wilkinson
Patricia Wilson
Barbara Wirtz
Dana Zecchino

SAVE THE DATES!

January 12 - GMM Annual Meeting and Vote

February 9 - GMM and Member Social

March 8 - GMM Member Placement and Counsel Info Night

March 26 - Allen Street Spring Garden Clean Up

April 2 - Garden Project & Lansing Roots Farm

April 10 - Race for the Place - MSU Safe Place

April 12 - GMM

April 24 - High Heels & High Tea

May 2 - Women Build - Habitat for Humanity

May 10 - Celebration

**The Junior League of Lansing's office is located at:
1231 Michigan Avenue, Suite 204 in East Lansing, Michigan.**

**Contact the office by phone at: 517.324.8716
or email: office@jllansing.org**

Office hours are Tuesday & Thursday, 9 a.m. to 12 p.m.



Becky Beauchaine Kulka
DIAMONDS AND FINE JEWELRY



MICHIGAN STATE UNIVERSITY

FOSTER SWIFT
FOSTER SWIFT COLLINS & SMITH PC || ATTORNEYS



HUBBELL
BRIARWOOD

LORI HACKER FULLER



laineyyehl.com



INDEPENDENT
BANK



JUNIOR LEAGUE OF LANSING
Women building better communities®

1231 Michigan Avenue, Suite 204
East Lansing, Michigan 48823

NON PROFIT ORG
U.S. POSTAGE
PAID
EAST LANSING, MI
PERMIT NO 2

